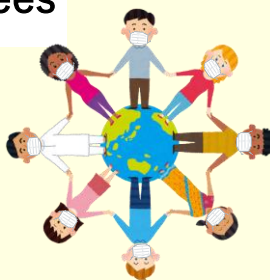


To all Technical Intern Trainees



To prevent the spread of COVID-19

It has been confirmed that technical intern trainees are being tested positive after arriving in Japan. To prevent the spread of the infection, be sure to observe the following.

1. Have the test at a reliable testing organization

- To obtain the Certificate of testing for COVID - 19 that is required for entry into Japan, please have the test conducted by a reliable testing organization.



2. Wait in a private room before heading to Japan !!

- After undergoing the tests required to enter Japan, avoid eating and drinking with family and friends, and after the tests, do not participate in any occasion that has a chance for infection.

- Avoid contact with others and as much as possible, spend your time in a private room, and eat alone in a private room.
- Please wear a mask while waiting for departure or while on board the plane to Japan, and disinfect your hands and fingers frequently.



3. Use the Fast Track

- Before departure, install the "Mysos" app on your smartphone, complete the procedures required to use Fast Track, and then head to Japan.



MySOS



MHLW · Quarantine station

If you are Entering or Returning to Japan

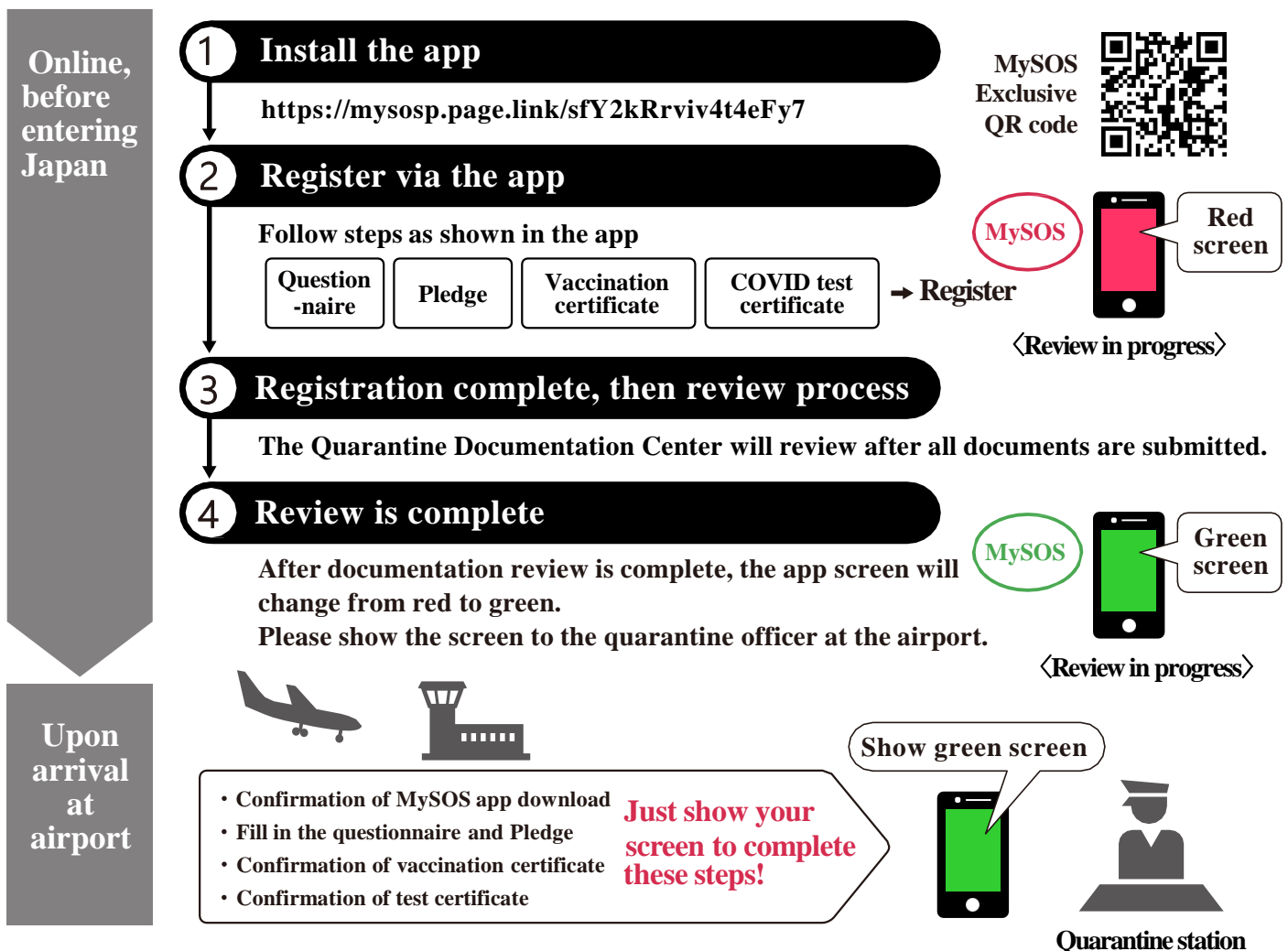
Fast Track is available

for those entering from Narita International Airport, Haneda Airport,
Chubu Centrair International Airport, Kansai International Airport, Fukuoka Airport .

Quarantine procedures upon arrival at the airport could still take some time due to the congestion situation, even if you have registered via Fast Track. Your understanding is appreciated.

This app can be used for some quarantine procedures before you enter Japan.

Fast Track Procedure



MySOS

Yellow screen



You may skip uploading of test result in case you wish to submit test result in paper format at arrival airport.

The screen will change to yellow after you have finished registering and checking your questionnaire, Pledge, and vaccination certificate. If that happens, please show the yellow screen and your test certificate (paper version, etc.) at the quarantine station.

※ The registration review process can take some time. Please check the website for details.

Fast Track website:
www.hco.mhlw.go.jp/fasttrack/en/

